



The Company

Who We Are

MIPL was born as a brainchild of Dr Satish C. Gupta in 1989. Since day one, we have focused on the efficacy and quality of our products, to become the undisputed leader of our segments in the ophthalmic industry. Our commitment towards quality is paramount and we believe good healthcare is a right of every human being, which is why manufacturing devices that are 100% reliable through constant progressive innovation is not only our passion but a commitment towards our vision. For three decades, MIPL has been involved in research, innovation, design and manufacturing of high quality products in order to help ophthalmologists across the globe to produce better result for their patients with the utmost satisfaction.

With a proven track record of cutting-edge innovation and a reputation for adhering to the international best practices, quality and reliability, we offer a myriad of ophthalmic devices to ensure patients best care and a hassle free procedure for the doctors. Our key product categories include diagnostic & surgical lenses, keratoplasty devices, ophthalmic diagnostic strips, vitreo-retina devices, cataract blades & specialty devices, fluid management devices, teaching & training ophthalmic devices and ophthalmic cannulas.

Mission

We are on a mission to transform the way the ophthalmologists, researchers, students and entire ophthalmic community deals with the challenges faced by them through our reliable and innovative products. World is beautiful and every human being deserves a chance to experience it. We are committed to do our part by producing best quality products and this is our way of contributing and giving back to the society.

Vision

We manufacture high quality ophthalmic devices which are 100% reliable through constant progressive innovation. We are dedicated towards our vision to help the ophthalmic community improve lives of their patients through our products.

Incorporation of
Madhu Instruments

1989

Became an ISO
certified company

2003

Received our CE
certification for all
products

Started production in
our new manufacturing
facility

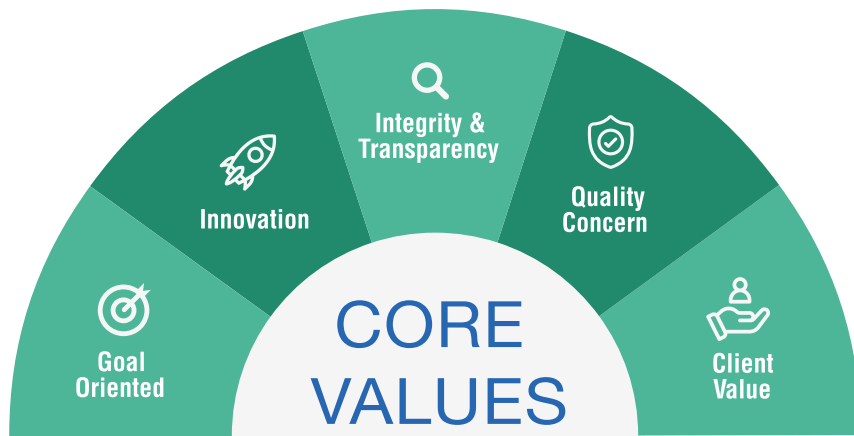
2005

Participated in our
first international
exhibition - AAO

2006

Started contract
manufacturing for
reputed USA & EU
customers

2009



◆ Values & Strengths

We are relentlessly sincere in our efforts to surpassing client expectations and be an exemplar for our valuable clients.

We are a team of goal oriented professionals keeping innovation at our core to serve our clients with integrity & transparency.

For last 30+ years we have been serving our clients across the globe. The trust our clients keep in us is a result of adhering to our core values at all times.

⚙️ Certification

Our continued efforts in product & process innovation have acted as a catalyst to not only earn the trust and reputation of all our customers but to impeccably excel on requirements and expectations of global accreditation agencies & certification standards like ISO, CE & US FDA.

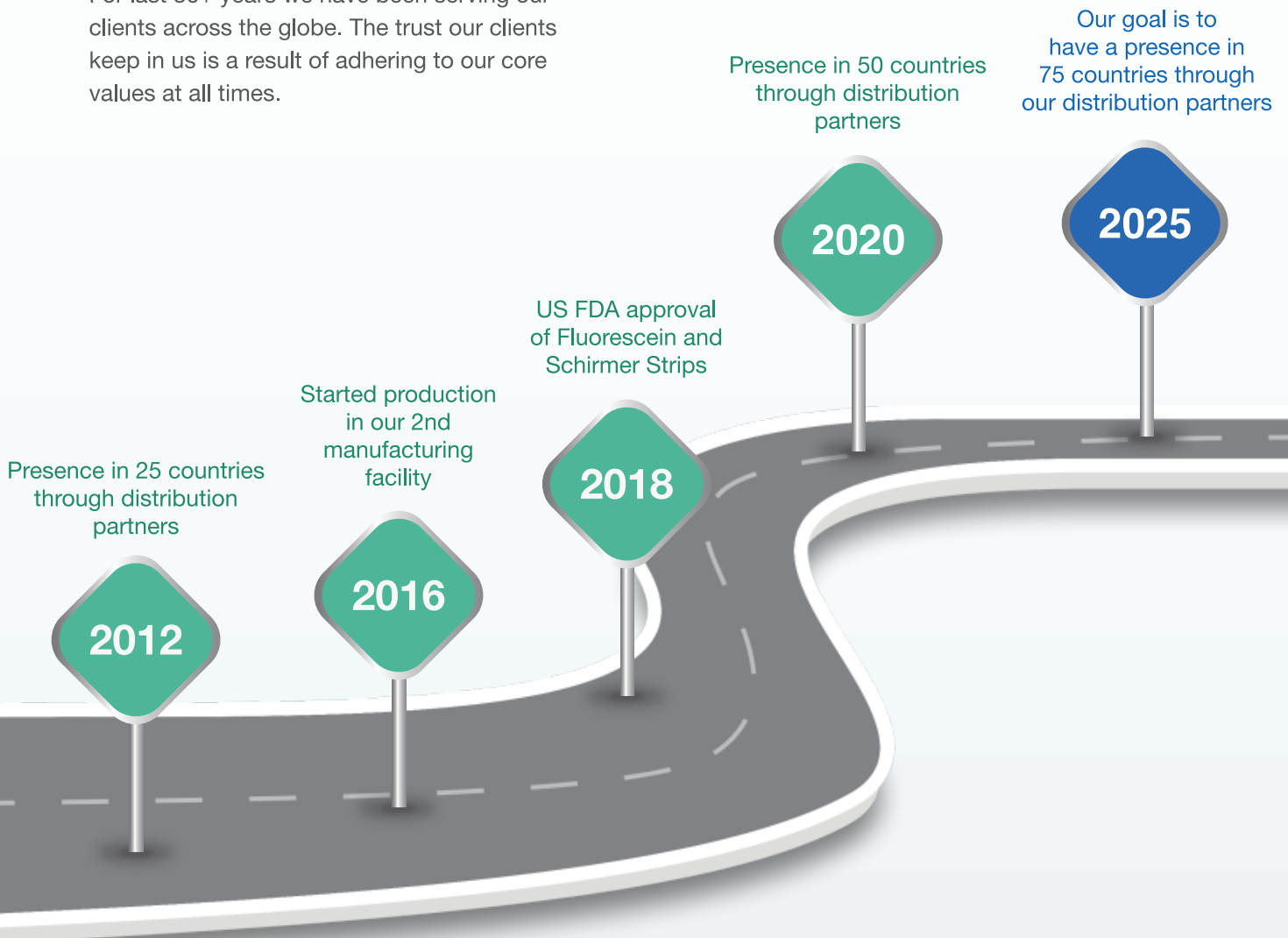


Table of Content

- Diagnostic & Surgical Lenses 01
- Keratoplasty & Cornea 05
- Diagnostic Strips 10
- Vitreo-retina 13
- Cataract & IOL 17
- Ophthalmic Cannulas 30
- Teaching & Training Devices 36
- Fluid Management Devices 39
- Miscellaneous 41

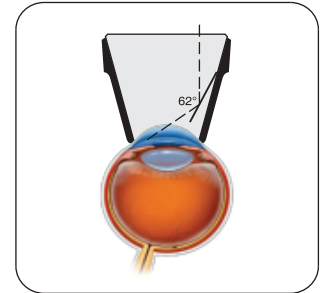
Single Mirror Goniolens

This gonio lens is used for viewing the anterior chamber angle and central retina.

Due to its small size, a single mirror goniolens is very convenient to handle. The mirror angle is 62° which when rotated through 360° gives a clear view of the anterior chamber angle. Its small contact surface makes it very useful while diagnosing adults as well as children with small palpebral fissure.

- Made in glass
- Contact medium required
- CE Certified

Product Code	Description	Mirror Angle	Qty. per box
MIPL/I1	Single Mirror Goniolens	62°	1 pc.



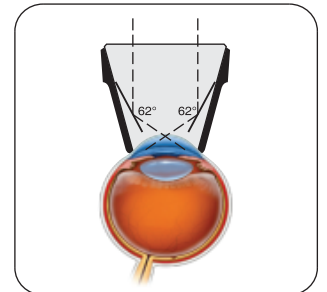
Two Mirror Goniolens

This gonio lens is used for viewing the anterior chamber angle and central retina.

Two opposing mirrors inclined at 62° provide a complete 360° view of angle with only 90° of rotation of the lens. Similar to a single mirror goniolens, the small contact surface helps in examination of children and adults with small fissures.

- Made in glass
- Contact medium required
- CE Certified

Product Code	Description	Mirror Angle	Qty. per box
MIPL/I2	Two Mirror Goniolens	62°/62°	1 pc.



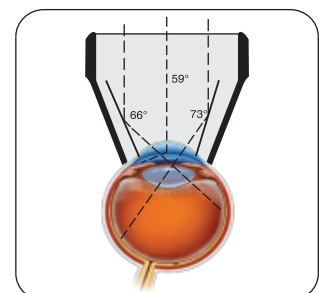
Three Mirror Goniolens

This gonio lens is used for viewing the anterior chamber angle and central & peripheral retina.

This lens has three mirrors angled at 59°, 66° and 73° and arranged at 120° intervals to permit viewing of the fundus and anterior chamber angle. The posterior pole is also observable through the central axis of the lens.

- Made in glass
- Contact medium required
- CE Certified

Product Code	Description	Mirror Angle	Qty. per box
MIPL/I3	Three Mirror Goniolens	59°/66°/73°	1 pc.



DIAGNOSTIC & SURGICAL LENSES



Four Mirror Goniolens

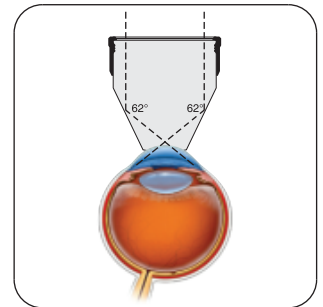
This is a standard gonio lens which is used for static and dynamic gonioscopy.



Four mirrors angled at 62° help in viewing all quadrants of the anterior chamber without rotation. The small contact surface of 9 mm diameter makes the lens very convenient to use. It has a unique detachable handle. Coupling fluid not required.

- Made in glass
- No contact medium required
- CE Certified

Product Code	Description	Mirror Angle	Qty. per box
MIPL/I4	Four Mirror Goniolens	62°	1 pc.



20D Aspheric Lens

This lens is used for general examination of the fundus using “Binocular Indirect Ophthalmoscope (BIO)”.



It provides a high resolution image of the retina in the OPD or the operating room. A 50° field of view helps in visualization up to the mid peripheral region. A dynamic examination with patients eye movements helps in visualization of the peripheral retina as well. A working distance of 50mm makes lens manipulation very easy for the user.

- Made in glass.
- Aspheric Optics.
- CE Certified.

Product Code	Description	Field of View	Qty. per box
MIPL/K1	20D Aspheric Lens	50°	1 pc.

DIAGNOSTIC & SURGICAL LENSES

78D Aspheric Lens

This Slit lamp lens is used for general examination of the fundus.



This Slit lamp lens offers an ideal combination magnification and field of view. It also provides an extended working distance from cornea. Superior glass optics offers high clarity images.

- Made in glass
- Aspheric optics
- CE Certified

Product Code	Description	Field of View	Qty. per box
MIPL/K2	78D Aspheric Lens	84°	1 pc.



90D Aspheric Lens

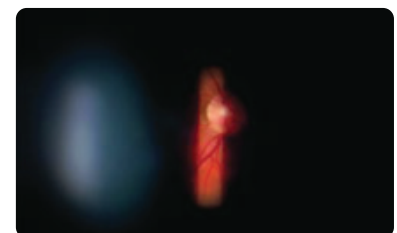
This Slit lamp lens is used for general examination of the fundus and small pupil examinations.



This Slit lamp lens is the most popular power for non-contact fundus examination. It offers a wide-field fundus imaging out to and beyond the equator. A high magnification provides an increased illuminated field area which makes it ideal for posterior pole scanning

- Made in glass
- Aspheric optics
- CE Certified

Product Code	Description	Field of View	Qty. per box
MIPL/K3	90D Aspheric Lens	94°	1 pc.

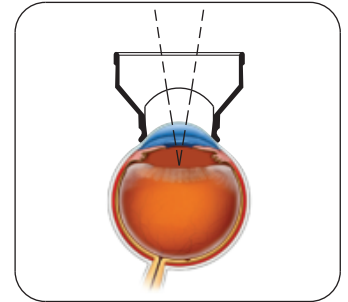


DIAGNOSTIC & SURGICAL LENSES



YAG Capsulotomy Lens

This lens is used for YAG laser capsulotomy procedures.



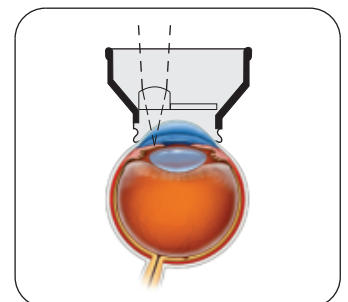
Used for ND-YAG laser posterior capsulotomy and anterior vitreolysis. The +30 D lens condenses the laser energy. The anodized light metal rim gives a firm grip on the lens.

Product Code	Description	Qty. per box
MIPL/J1	YAG Capsulotomy Lens	1 pc.

- Made in glass
- CE Certified

YAG Iridectomy Lens

This lens is used for YAG laser iridectomy procedures.



This lens consists of a modified Goldmann type fundus lens with a 7.90 mm diameter +70 D plano-convex lens bonded to the anterior surface. The +70 D button lens helps in condensing the laser energy so that the procedure can be carried out at lower power settings. The anodized light metal rim gives a firm grip on the lens.

Product Code	Description	Qty. per box
MIPL/J2	YAG Iridectomy Lens	1 pc.

- Made in glass
- CE Certified

KERATOPLASTY & CORNEA

Endothelial Punch

This mechanical device gives an excellent donor corneal button punched out from the endothelial side of corneo scleral button.

Features

- Universal - Any size of trephine from 2 mm to 11 mm can be fitted
- Precentered - The trephine and the teflon block are automatically centered for all sized trephines
- Spring Recoil - After completion of the cut, the trephine retracts back with an inbuilt spring system
- Sterilization - Endothelial Punch can be sterilized by autoclaving or EO gas
- Each set consists of two plungers
- CE Certified



Product Code	Description	Qty. per box
MIPL/N1	Endothelial Punch	1 pc.

Corneal Trephine

Nanoedge corneal trephines are ready-to-use circular blades designed for accurate cutting of corneal donor buttons to be used in penetrating keratoplasty.



- An ultrasharp thin profile cutting edge minimizes damage to the endothelial cells
- Designed for a precise and symmetrical cut of the corneal tissue
- See through design helps in accurate positioning
- Can be used with or without an endothelial punch
- Innovative protective packaging to ensure safety of the cutting edge
- EO Sterile
- CE certified

Product Code	Description	Qty. per box
MIPL/C1/2.00	2.00 mm Diameter	1 pc. (Sterile)
MIPL/C1/3.00	3.00 mm Diameter	1 pc. (Sterile)
MIPL/C1/5.00	5.00 mm Diameter	1 pc. (Sterile)
MIPL/C1/6.00	6.00 mm Diameter	1 pc. (Sterile)
MIPL/C1/6.50	6.50 mm Diameter	1 pc. (Sterile)
MIPL/C1/7.00	7.00 mm Diameter	1 pc. (Sterile)
MIPL/C1/7.25	7.25 mm Diameter	1 pc. (Sterile)
MIPL/C1/7.50	7.50 mm Diameter	1 pc. (Sterile)
MIPL/C1/7.75	7.75 mm Diameter	1 pc. (Sterile)
MIPL/C1/8.00	8.00 mm Diameter	1 pc. (Sterile)
MIPL/C1/8.25	8.25 mm Diameter	1 pc. (Sterile)
MIPL/C1/8.50	8.50 mm Diameter	1 pc. (Sterile)
MIPL/C1/8.75	8.75 mm Diameter	1 pc. (Sterile)
MIPL/C1/9.00	9.00 mm Diameter	1 pc. (Sterile)
MIPL/C1/9.50	9.50 mm Diameter	1 pc. (Sterile)
MIPL/C1/10.00	10.00 mm Diameter	1 pc. (Sterile)
MIPL/C1/10.50	10.50 mm Diameter	1 pc. (Sterile)
MIPL/C1/11.00	11.00 mm Diameter	1 pc. (Sterile)
MIPL/C1/11.50	11.50 mm Diameter	1 pc. (Sterile)
MIPL/C1/12.00	12.00 mm Diameter	1 pc. (Sterile)
MIPL/C1/14.00	14.00 mm Diameter	1 pc. (Sterile)
MIPL/C1/16.00	16.00 mm Diameter	1 pc. (Sterile)
MIPL/C1/18.00	18.00 mm Diameter	1 pc. (Sterile)

KERATOPLASTY & CORNEA



Suction Trepine

The Nanoedge suction trephine is designed to take out a circular corneal button of predetermined diameter from the recipient cornea in a corneal transplant (Keratoplasty) procedure. The cutting action of the circular blade is assisted by a manual suction mechanism, which holds the recipient cornea firmly while the cutting is being performed.



Product Code	Description	Qty. per box
MIPL/C2/7.00	7.00 mm Diameter	1 pc. (Sterile)
MIPL/C2/7.25	7.25 mm Diameter	1 pc. (Sterile)
MIPL/C2/7.50	7.50 mm Diameter	1 pc. (Sterile)
MIPL/C2/7.75	7.75 mm Diameter	1 pc. (Sterile)
MIPL/C2/8.00	8.00 mm Diameter	1 pc. (Sterile)
MIPL/C2/8.25	8.25 mm Diameter	1 pc. (Sterile)
MIPL/C2/8.50	8.50 mm Diameter	1 pc. (Sterile)
MIPL/C2/8.75	8.75 mm Diameter	1 pc. (Sterile)
MIPL/C2/9.00	9.00 mm Diameter	1 pc. (Sterile)

- A 360° suction cavity creates a vacuum to hold the trephine securely on to the surface of the cornea
- A precisely calibrated rotating mechanism allows the surgeon to advance the blade depth 0.25mm with each 360° rotation
- 1 Quarter turn = 0.063mm (63 microns)
- Ultra sharp blade minimizes damage to the endothelial cells and reduces undercut
- Marker pin on the non-reflective trephine base allows the user to calculate the quarter and full turns through which the blade has progressed
- Designed to give a consistently accurate, uniform and perpendicular cut
- EO Sterile
- CE certified

Fixed Depth Trepine

Nanoedge "Fixed Depth Trepine" are ready-to-use circular blades designed for accurate fixed depth cutting of corneal donor buttons or the recipient eye during corneal transplant surgery.



Product Code	Description	Qty. per box
MIPL/C6/7.00	7.00 mm Diameter	1 pc. (Sterile)
MIPL/C6/7.50	7.50 mm Diameter	1 pc. (Sterile)
MIPL/C6/8.00	8.00 mm Diameter	1 pc. (Sterile)
MIPL/C6/8.50	8.50 mm Diameter	1 pc. (Sterile)

★ Each size is available in 200 µm, 300 µm & 400 µm blade height

- An ultrasharp thin profile cutting edge minimizes damage to the endothelial cells
- Designed for a precise and symmetrical cut of the corneal tissue
- See through design helps in accurate positioning
- Can be used with or without an endothelial punch
- Innovative protective packaging to ensure safety of the cutting edge
- EO Sterile

KERATOPLASTY & CORNEA

Teflon Block

The corneo scleral tissue is placed over the Teflon block and the donor button then punched out.



- Aspheric curvature to match corneal curvature
- Central hole helps in accurate positioning
- Can be used with or without an endothelial punch
- EO Sterile

Product Code	Description	Qty. per box
MIPL/D12	Teflon Block	10 pc. (Sterile)

Artificial Anterior Chamber

Artificial anterior chamber allows the surgeon to cut the donor cornea from the epithelial side to minimize surgically induced astigmatism.

- It is designed to hold a 14 to 18 mm diameter scleral rim firmly in place while the viscoelastic protects the corneal endothelium
- Applications of Artificial Anterior Chamber
 - ALK (Anterior Lamellar Keratoplasty)
 - PLK (Posterior Lamellar Keratoplasty)
 - DLEK (Deep Lamellar Endothelial Keratoplasty)
 - DSEK (Descemets Stripping Endothelial Keratoplasty)
 - Penetrating Keratoplasty from MK medium preserved corneo scleral button
- Made of titanium for long life and multiple uses
- Sterilization – can be sterilized by autoclaving or EO gas
- CE Certified



Product Code	Description	Qty. per box
MIPL/N6	Artificial Anterior Chamber	1 pc.



KERATOPLASTY & CORNEA



Trephine Punch (Non Vacuum)

The Nanoedge Trephine Punch (Non-Vacuum) is designed to take out a circular corneal button of predetermined diameter from the donor cornea in a corneal transplant procedure.



Product Code	Description	Qty. per box
MIPL/C4/01/7.00	7.00 mm Diameter	1 pc. (Sterile)
MIPL/C4/01/7.25	7.25 mm Diameter	1 pc. (Sterile)
MIPL/C4/01/7.50	7.50 mm Diameter	1 pc. (Sterile)
MIPL/C4/01/7.75	7.75 mm Diameter	1 pc. (Sterile)
MIPL/C4/01/8.00	8.00 mm Diameter	1 pc. (Sterile)
MIPL/C4/01/8.25	8.25 mm Diameter	1 pc. (Sterile)
MIPL/C4/01/8.50	8.50 mm Diameter	1 pc. (Sterile)
MIPL/C4/01/8.75	8.75 mm Diameter	1 pc. (Sterile)
MIPL/C4/01/9.00	9.00 mm Diameter	1 pc. (Sterile)

- This device features ultra sharp trephine blade mounted in a white nylon housing with four stainless steel guide pins
- Designed to give a consistently accurate, uniform and perpendicular cut
- A cutting block base with four corresponding holes helps in automatic centering of the trephine blade over the donor corneal tissue
- A blue nylon spacer ring is provided to prevent trephine blade edge getting damaged during transportation and storage
- See through design helps in accurate positioning
- EO Sterile
- CE Certified

Trephine Punch (Vacuum)

The Nanoedge Trephine Punch (Vacuum) is designed to take out a circular corneal button of predetermined diameter from the donor cornea in a corneal transplant procedure. Cutting action of the Trephine Punch is assisted by a manual Vacuum mechanism, which holds the cornea firmly in place while the cutting is being performed.



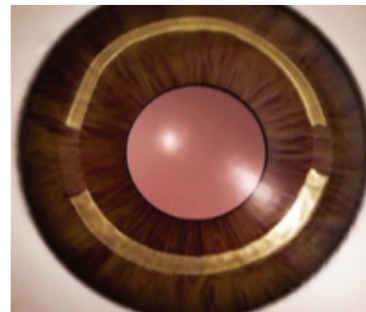
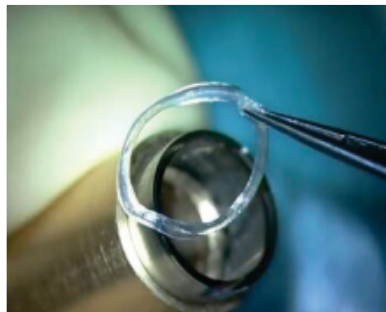
Product Code	Description	Qty. per box
MIPL/C4/02/7.00	7.00 mm Diameter	1 pc. (Sterile)
MIPL/C4/02/7.25	7.25 mm Diameter	1 pc. (Sterile)
MIPL/C4/02/7.50	7.50 mm Diameter	1 pc. (Sterile)
MIPL/C4/02/7.75	7.75 mm Diameter	1 pc. (Sterile)
MIPL/C4/02/8.00	8.00 mm Diameter	1 pc. (Sterile)
MIPL/C4/02/8.25	8.25 mm Diameter	1 pc. (Sterile)
MIPL/C4/02/8.50	8.50 mm Diameter	1 pc. (Sterile)
MIPL/C4/02/8.75	8.75 mm Diameter	1 pc. (Sterile)
MIPL/C4/02/9.00	9.00 mm Diameter	1 pc. (Sterile)

- This device features ultra sharp trephine blade mounted in a white nylon housing with four stainless steel guide pins
- Designed to give a consistently accurate, uniform and perpendicular cut
- A cutting block base with four corresponding holes helps in automatic centering of the trephine blade over the donor corneal tissue
- A spring based syringe system (to create the vacuum) is attached to the cutting block base through a silicon tubing
- A blue nylon spacer ring is provided to prevent trephine blade edge getting damaged during transportation and storage
- A seating ring housing with four stainless steel guide pins is provided to make sure that the cornea is in complete contact with the cutting block white base creating a vacuum
- See through design helps in accurate positioning
- Individually packed and sealed in an inner blister and an outer peel open pouch
- CE Certified
- EO Sterile

KERATOPLASTY & CORNEA

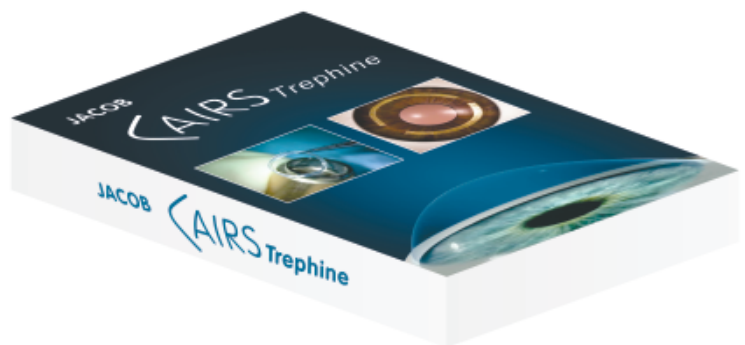
JACOB CAIRS Trephine

The Jacob CAIRS Trephine is a double blade trephine used to create allogenic donor tissue ring of desired thickness for making the Corneal Allogenic Intrastromal Ring Segments (CAIRS). These segments are used in the CAIRS procedure. CAIRS has been successfully used in patients with keratoconus globally. This surgical approach is aimed primarily at flattening the cone (ectatic cornea) and regularizing the topography thereby improving vision. In the CAIRS procedure, instead of using plastic ring segments, donor corneal tissue strips are inserted intrastromally into the mid-peripheral recipient cornea making the procedure safer than synthetic segments while also allowing it to be performed in a much wider spectrum of patients ranging from mild to very steep and very thin corneas where synthetic segments are not possible.



Features

- Ultrasharp thin profile double cutting edge.
- Designed for a precise and symmetrical cut of the corneal tissue
- See through design helps in accurate positioning
- Innovative protective packaging to ensure safety of the cutting edge
- EO Sterile



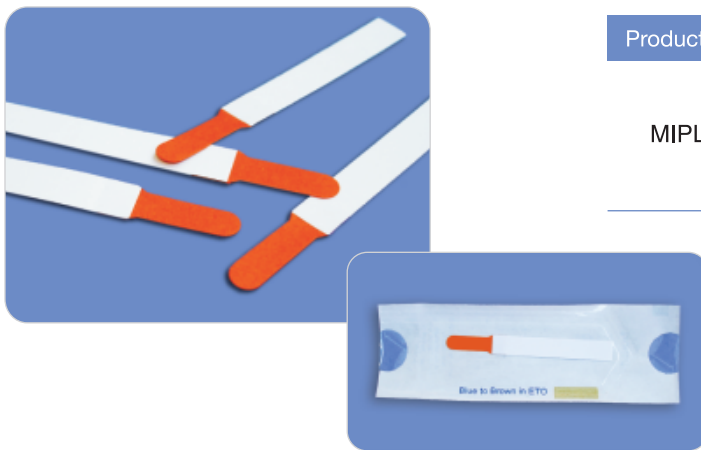
Product Code	Description	Qty. per box
MIPL/C5/6.50-8.00	Diameter of inner blade - 6.50 mm Diameter of outer blade - 8.00 mm	1 Pc. (Sterile)
MIPL/C5/7.75-8.75	Diameter of inner blade - 7.75 mm Diameter of outer blade - 8.75 mm	1 Pc. (Sterile)
MIPL/C5/8.00-9.50	Diameter of inner blade - 8.00 mm Diameter of outer blade - 9.50 mm	1 Pc. (Sterile)

DIAGNOSTIC STRIPS

Fluoro Touch

Fluorescein Sodium
Ophthalmic Strips

Most commonly used diagnostic strip to visualize defects or abrasions in the corneal epithelium by staining the areas of cellular loss.



Product Code	Description	Qty. per box
MIPL/A4	Fluorescein Sodium Ophthalmic Strips (Box of 100)	100 strips (Sterile)
	Fluorescein Sodium Ophthalmic Strips (Box of 300)	300 strips (Sterile)

Indications

- Useful for evaluating hard contact lens fitting
- Applanation tonometry
- Evaluating tear film breakup time
- To visualise defects in the corneal epithelium

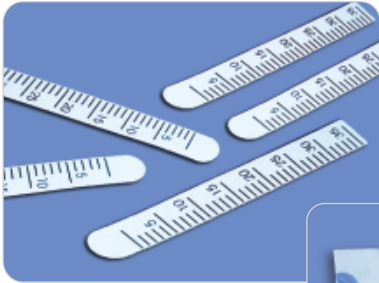
Specifications

- Available as sterile strips in individual pouches
- Each strip is impregnated with 1.0 mg of Fluorescein sodium
- Innovative peel open packing pouch with transparent film on one side
- CE certified variant also available for evaluating contact lens fitting

DIAGNOSTIC STRIPS

Tear Touch Schirmer Tear Test Strips

This diagnostic strip made from the Whatman Filter Paper No. 41 measures the amount of tear production.



Product Code	Description	Qty. per box
MIPL/A1	Schirmer Tear Test Strips	100 strips (Sterile)



Indications

- Used for measurement of tear production

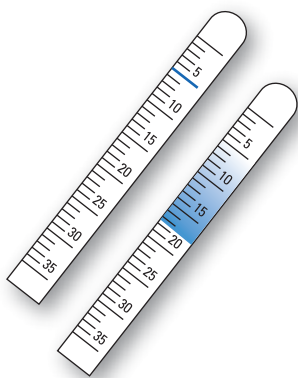
Specifications

- Each strip has a printed mm scale so that they can be easily read and recorded
- Available as sterile strips in individual pouches
- Innovative peel open packing pouch with transparent film on one side
- CE certified

Tear Touch Blu

Schirmer Tear Test
Strips with Blue Mark

This diagnostic strip with Indicator Dye made from the Whatman Filter Paper No. 41 measures the amount of tear production.



Product Code	Description	Qty. per box
MIPL/A6	Schirmer Tear Test Strips with Blue Mark	100 strips (Sterile)



Indications

- Used for measurement of tear production

Specifications

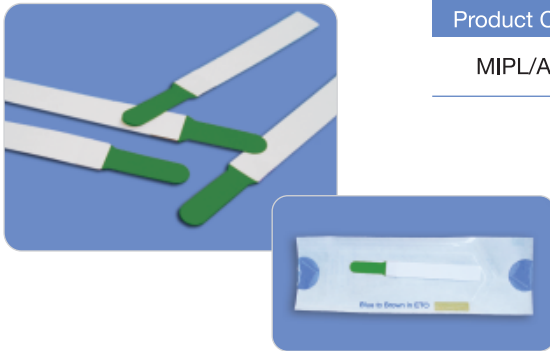
- Each strip has a printed mm scale with Indicator Dye
- Can be kept for result comparison before and after treatment
- Innovative peel open packing pouch with transparent film on one side
- CE certified

DIAGNOSTIC STRIPS

Green Touch

Lissamine Green Strips

These strips work by staining the cornea bluish green upon instillation. This causes “speckling” of the cornea, which gives the user immediate indication of any dry patches, as well as any muco-deficient or damaged corneal cells.



Product Code	Description	Qty. per box
MIPL/A3	Lissamine Green Strips	100 strips (Sterile)



Indications

- Used to stain preferentially damaged or devitalized cells
- To indicate any dry patches, as well as any mucus-deficient or damaged corneal epithelial cells

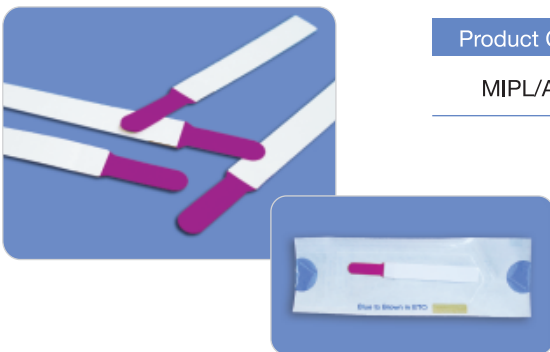
Specifications

- It does not stain healthy, proliferating ocular surface cells and has a minimal effect on cell viability
- It does not sting the eye like Rose Bengal, and a white light or blue light can be used on the slit lamp during detection
- Available as sterile strips in individual pouches
- Each strip is impregnated with 1.50 mg of Lissamine Green
- Innovative peel open packing pouch with transparent film on one side

Rose Touch

Rose Bengal Strips

Rose Bengal is an ocular stain that has affinity for degenerating epithelium.



Product Code	Description	Qty. per box
MIPL/A2	Rose Bengal Strips	100 strips (Sterile)



Indications

- It stains devitalized or degenerated epithelial cells as well as mucous filaments

Specifications

- Available as sterile strips in individual pouches
- Each strip is impregnated with 1.50 mg of Rose Bengal
- Innovative peel open packing pouch with transparent film on one side

VITREO RETINA

Vitrectomy Lens Set

This vitrectomy lens set comprises of a set of 7 contact lenses and 2 rings to hold the contact lenses in position. The main advantage of this system is that it minimizes the dependence of a well-trained assistant.



- High quality glass optics for clear images
- Unique silicone storage cum sterilization container
- Autoclavable Lenses
- Suturable metal ring
- Silicone ring for short procedures
- Flexibility to order individual lenses and rings

Product Code	Description	Qty. per box
MIPL/L1	Vitrectomy Lens Set (7 Lenses + 2 Rings)	1 Pc.

Lens	Central Fundus	Biconcave (-90D)	Prism 20°	Prism 30°	Biconcave Prism	Magnifying	Widefield
Code No.	MIL 1	MIL 2	MIL 3	MIL 4	MIL 4A	MIL 5	MIL 5A
Cross Section View							

Irrigating Vitrectomy Lens Set

This set comprises of 3 lenses which have a provision to attach the infusion line for irrigation during a VR surgery.



- High quality glass optics for clear images
- Lens description engraved on the handle for easy identification
- Flexibility to order individual lenses
- CE Certified

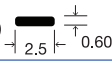
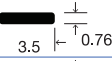
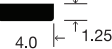
Product Code	Description	Field of View	Magnification	Contact Diameter	Qty. per box
MIPL/L2/BC	-90D/Biconcave		0.80 X (air filled)	10 mm	1 pc.
MIPL/L2/WF	Widefield		0.50 X (fluid filled)	10 mm	1 pc.
MIPL/L2/CF	Central Fundus		1.00 X	10 mm	1 pc.

VITREO RETINA

Silicone Band

Scleral buckling devices are used in a retinal detachment surgery.

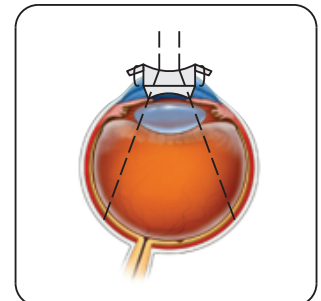
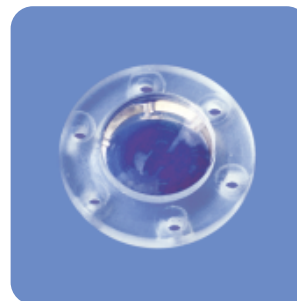


Product Code	Description	Qty. per box
MIPL/H2/2.5	2.5 mm (Style 240) 	10 pcs. (Sterile)
MIPL/H2/3.5	3.5 mm (Style 41) 	10 pcs. (Sterile)
MIPL/H2/4.0	4.0 mm (Style 42) 	10 pcs. (Sterile)

- Made from medical grade silicone in USA
- Double pouch packed
- EO Sterile
- Free sleeve with each band

Temporary Keratoprosthesis

This disposable device is used in a vitreo retinal surgery with opaque or damaged cornea.



- Six suture holes around the rim for creating a sealed system for the VR procedure
- The device acts as a temporary cornea during the surgery
- Biconcave design gives a widefield view of the retina

Product Code	Description	Qty. per box
MIPL/D6/7.50	Temporary Keratoprosthesis (7.50mm)	1 pc. (Sterile)
MIPL/D6/9.00	Temporary Keratoprosthesis (9.00mm)	1 pc. (Sterile)

SteadyRING SELF STABILIZING RING

A disposable vitrectomy ring to stabilize the vitrectomy lenses without sutures during a VR surgery.



- Special 'tripod design' for better stability during vitreo retinal surgical procedures
- Eliminates the need for a skilled assistant
- No need to suture the lens to the sclera during the surgery
- Supplied unsterile

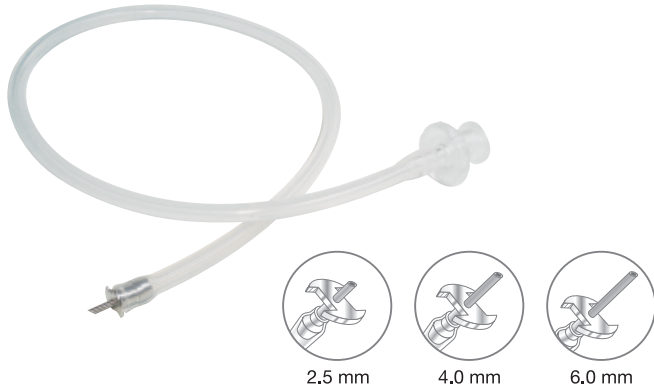


Product Code	Description	Qty. per box
MIPL/D13/SI	Steady Ring (Silicone)	1 Pc.

VITREO RETINA

Vitrectomy Infusion Cannula

Disposable cannula used for infusion of irrigation fluids or surgical fluids like silicone oil/PFCL during vitreo-retina ophthalmic surgical procedures.



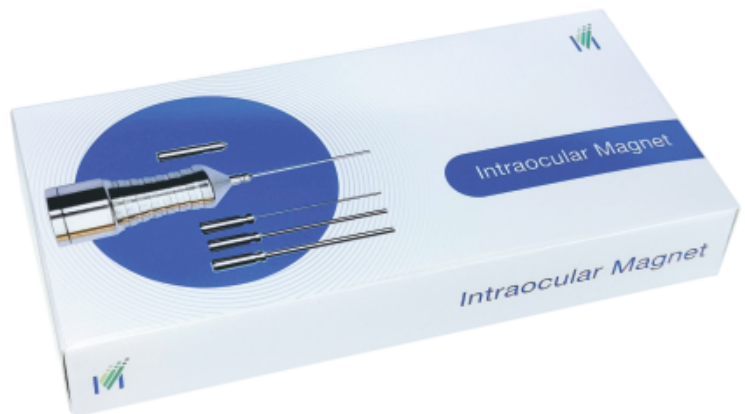
- Thin wall stainless steel tube is used for maximum flow
- Designed especially for silicone oil injection
- Superior grip of silicone tube at cannula end as well as connector end

Product Code	Description	Qty. per box
MIPL/E1/2.5	2.5 mm tip (20G)	10 pcs. (Sterile)
MIPL/E1/4.0	4.0 mm tip (20G)	10 pcs. (Sterile)
MIPL/E1/6.0	6.0 mm tip (20G)	10 pcs. (Sterile)

Intraocular Magnet

A set of changeable tips with a rare earth magnet handle for atraumatic removal of magnetic foreign bodies during a VR surgery.

- Set of easily changeable Tips
 - Posterior segment - 16G, 18G, 20G and 23G
 - Anterior segment – 1 no.
- Stainless Steel handle
- Extremely strong rare earth magnets used
- User friendly design/ergonomic grip
- Free sterilization tray supplied with the magnet



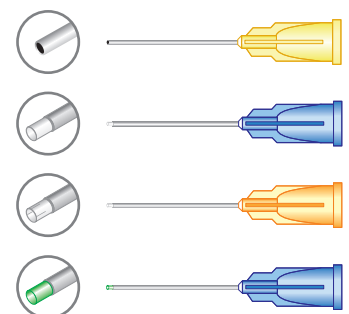
Product Code	Description	Qty. per box
MIPL/G6/SM	Intraocular Magnet	1 set

Silicone Tip Cannula

A disposable silicone tip cannula is used for atraumatic removal of intraocular fluids by active or passive aspiration during a VR surgery.



Product Code	Description	Silicon Tip Length	Qty. per box
MIPL/E2/STR/20G	Silicone Tip Cannula (Straight/Regular) – 20G	1 mm	10 pcs (Sterile)
MIPL/E2/STBR/20G	Silicone Tip Cannula (Straight/Brush) – 20G	1 mm	10 pcs (Sterile)
MIPL/E2/STR/23G	Silicone Tip Cannula (Straight/Regular) – 23G	1 mm	10 pcs (Sterile)
MIPL/E2/STBR/23G	Silicone Tip Cannula (Straight/Brush) – 23G	1 mm	10 pcs (Sterile)
MIPL/E2/STR/25G	Silicone Tip Cannula (Straight/Regular) – 25G	1 mm	10 pcs (Sterile)
MIPL/E2/STBR/25G	Silicone Tip Cannula (Straight/Brush) – 25G	1 mm	10 pcs (Sterile)
MIPL/E2/GN/STR/23G	Silicone Tip Cannula (Straight/Regular) Green - 23G	1 mm	10 pcs (Sterile)
MIPL/E2/GN/STR/25G	Silicone Tip Cannula (Straight/Regular) Green - 25G	1 mm	10 pcs (Sterile)



- Ultra thin wall cannula for maximum flow
- CE Certified

Product Code	Description	Silicon Tip Length	Qty. per box
MIPL/E2/BTC/20G	Blunt Tip Cannula – 20G	N/A	10 pcs (Sterile)
MIPL/E2/BTC/23G	Blunt Tip Cannula – 23G	N/A	10 pcs (Sterile)
MIPL/E2/BTC/25G	Blunt Tip Cannula – 25G	N/A	10 pcs (Sterile)

- Ultra thin wall cannula for maximum flow

VITREO RETINA

Backflush Instruments

A set of useful handles with or without backflush reservoir for passive aspiration of intraocular fluids during a VR surgery.

Flute Handle (Charles)

This is a simple instrument for passive aspiration of intraocular fluids.

- Supplied unsterile
- User friendly design/ergonomic grip
- CE Certified



Product Code	Description	Qty. per box
MIPL/N8	Flute Handle (Charles)	1 pc.



- Supplied unsterile
- User friendly design/ergonomic grip

Backflush Handle (Active Aspiration)

This instrument incorporates a silicone backflush reservoir on the conventional Charles flute handle which helps in safe backflushing of the incarcerated tissue during active aspiration of intraocular fluids.

Product Code	Description	Qty. per box
MIPL/E17	Backflush Handle (Active Aspiration)	1 pc.

Backflush Handle (Passive Aspiration)

This instrument incorporates a silicone backflush reservoir on the conventional Charles flute handle which helps in safe backflushing of the incarcerated tissue during passive aspiration of intraocular fluids.

- Supplied unsterile
- User friendly design/ergonomic grip
- CE Certified



Product Code	Description	Qty. per box
MIPL/N7	Backflush Handle (Passive Aspiration)	1 pc.



Backflush Flute Needle with Silicone Tip Cannula



This instrument incorporates a silicone backflush reservoir on the conventional Charles flute handle as well as a silicon tip needle.

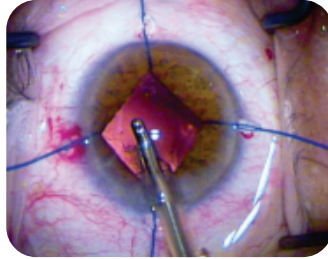
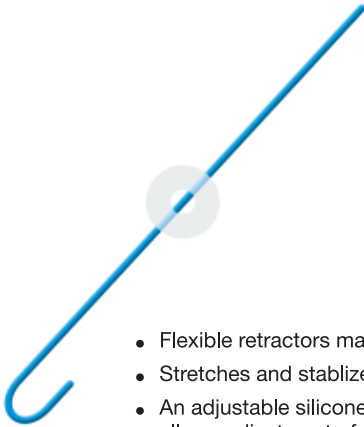
- EO Sterile
- Disposable

Product Code	Description	Qty. per pack
MIPL/E3/20G	Backflush flute needle with silicone tip cannula -20G	1 pc. (Sterile)
MIPL/E3/23G	Backflush flute needle with silicone tip cannula -23G	1 pc. (Sterile)

CATARACT & IOL

IrisCare Flexible Iris Retractors

Iris retractors are used for temporary retraction (pupil enlargement) of the iris where dilation cannot be achieved pharmacologically.

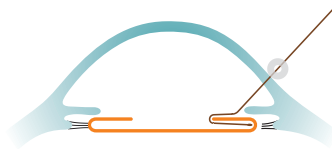


- Flexible retractors made of bright blue PP (Polypropylene)
- Stretches and stabilizes the Iris during the cataract surgery
- An adjustable silicone stopper provides a superior grip and allows adjustment of the pupil size
- Easy to insert and remove
- CE certified

Product Code	Description	Qty. per box
MIPL/D1	Iris Retractors	5 pcs. (Sterile)

CapsuleCare A Capsular Bag Supporting Device

Capsule hooks are used for temporary support of the capsular bag during a cataract surgery when the zonules are weak or in case of subluxated lenses.



- Capsule hooks are made of Nylon with an adjustable silicone lock
- Designed such that the hook is angled to be in the plane of the anterior capsule
- Easy to get a firm and reliable grip on the rim
- Tip of the hook is rounded to prevent any accidental damage to the peripheral capsule while placing the hooks in the bag
- The round tip also provides a larger support area per hook there by reducing the number of hooks required in each surgery
- Silicone lock helps in retaining the hook in retracted position during the surgery
- CE certified

Product Code	Description	Qty. per box
MIPL/D8	Capsule Hooks	5 pcs. (Sterile)

Advantages

- Maintains the position of the capsule during phaco
- Supports the fornix as well as the capsulorhexis rim, so that the peripheral capsule isn't attracted towards the phaco tip
- Avoids the problem of the capsular tension ring trapping cortex
- Prevents zonular stress during nuclear rotation
- Makes it possible to perform posterior chamber phaco even with subluxated lenses having minimum zonular support
- Easy to insert and remove

Capsular Tension Ring

Capsular tension ring allow expansion and stabilization of the capsular bag to facilitate a safe IOL implantation and maintain good IOL centration. Capsular tension ring is a highly flexible clear PMMA ring of haptic thickness 0.18 mm.



Indications

- Anticipated zonular dehiscence
- Lens subluxation
- Expected complications during phaco surgery
- Implantation of foldable IOLs
- High risk myopic eyes

Advantages

- Circular expansion and stabilization of the capsular bag
- Reduced risk of capsular fibrosis
- Reduced risk of capsular shrinking
- Safe IOL centration in eyes with zonular dehiscence
- Stabilized conditions during phaco surgery
- CE certified

Product Code	Model	Design	Normal Size	Compressed Size	Eyelets	Material	Qty. per box
MIPL/D2/T3	CTR Type 3		12.0 mm	10.0 mm	2	PMMA	1 pc. (Sterile)
MIPL/D2/T4	CTR Type 4		13.0 mm	11.0 mm	2	PMMA	1 pc. (Sterile)
MIPL/D2/T5	CTR Type 5		14.0 mm	12.0 mm	2	PMMA	1 pc. (Sterile)

Capsular Tension Ring Injector

Capsular tension ring injector is used for controlled injection of a capsular tension ring into the capsular bag.



Advantages

- Controlled insertion of the CTR in the capsular bag
- Extremely easy to use
- CE certified

Product Code	Description	Qty. per Box
MIPL/D4	Capsular Tension Ring Injector	10 pcs. (Sterile)



CATARACT & IOL



Preloaded Capsular Tension Ring

CapSafe Preloaded Capsular Tension Ring is a single-use injector with a capsular tension ring preloaded in it. A CTR is a highly flexible clear PMMA (polymethylmethacrylate) ring used for expansion and stabilization of the capsular bag to facilitate a safe IOL implantation and maintain a good IOL centration.



Product Description

Product Code	Description				Qty. per box
	Model	CTR Model	Design	Implantation Direction	
MIPL/D18/T3/LF	Preloaded CTR (Type 3 - LEFT)	CTR Type 3 12.00 mm - 10.00 mm		Left	1 Pc. (Sterile)
MIPL/D18/T3/RT	Preloaded CTR (Type 3 - RIGHT)	CTR Type 3 12.00 mm - 10.00 mm		Right	1 Pc. (Sterile)
MIPL/D18/T4/LF	Preloaded CTR (Type 4 - LEFT)	CTR Type 4 13.00 mm - 11.00 mm		Left	1 Pc. (Sterile)
MIPL/D18/T4/RT	Preloaded CTR	CTR Type 4		Right	1 Pc. (Sterile)

Indications

- Anticipated zonular dehiscence.
- Lens subluxation.
- Expected complications during phaco surgery.
- Implantation of foldable IOLs.
- High risk myopic eyes.

Features

- The Preloaded CTR can be injected through an incision of 2.20 mm.
- Long insertion tube which is helpful in cases of deep set eyes.
- Safety spring function to avoid accidental detachment of the CTR during implantation.
- Both clockwise and anticlockwise implantation models available.
- Implantation direction engraved on the Injector Body.
- Secure snap-fit blister and medical grade peel open pouch packaging.

Advantages

- User friendly loading procedure.
- Smooth and controlled implantation of the CTR.
- Tapered tip for easy incision entry.
- Circular expansion and stabilization of the capsular bag.
- Reduced risk of capsular shrinking.
- Safe IOL centration in eyes with zonular dehiscence.
- Stabilized conditions during phaco surgery.
- EO Sterile

CATARACT & IOL

CAPSULE SUPPORT SEGMENT

Gupta Segment

This is a partial ring of clear PMMA covering approximately one quadrant with a scleral fixation eyelet for temporary or permanent fixation.



Indications

- Cases with extreme zonular weakness
- Cases with missing zonules larger than 4 clock hours
- Lens subluxation

Advantages

- It is used to stabilize and recenter the capsular bag
- Specially designed for scleral fixation with sutures through eyelets in a cataract surgery
- The eyelet is projecting anteriorly which allows it to sit outside the capsular bag
- CE certified
- EO Sterile

Product Code	Description					Qty. per box
	Model	Design	Size	Eyelets	Material	
MIPL/D11/GS	Capsule Support Segment (Gupta Segment)		9.00 mm	3	Clear PMMA	1 pc. (Sterile)

CANABRAVA Gupta Segment

Canabrava Gupta Segment (Capsule Support Segment) is a partial ring of clear PMMA covering approximately one quadrant with a specially designed scleral fixation arm for permanent fixation.



Indications

- Cases with extreme zonular weakness.
- Cases with missing zonules larger than 4 clock hours
- Lens subluxation

Advantages

- Blunt-tipped eyelets to aid in the insertion of the ring.
- Additional eyelet to suture the ring to scleral tissue for better stability of the capsular bag.
- Special angle of the scleral fixation arm avoids tilting during the surgery.
- The eyelet is projecting anteriorly which allows it to sit outside the capsular bag.
- Due to the small size of the segment it is easier to insert inside the bag.
- EO Sterile

Product Code	Description					Qty. per box
	Model	Design	Size	Eyelets	Material	
MIPL/D11/CGS	Capsule Support Segment (Canabrava Gupta Segment)		6.00 mm	3	Clear PMMA	1 pc. (Sterile)

CATARACT & IOL



Capsular Tension Ring with Scleral Fixation Arm

This is a modified CTR which has an additional fixation eyelet that allows it to be sutured to the scleral wall without piercing the capsular bag. This ring is used in cases where a standard CTR may not provide adequate centration and stability.



Indications

- Cases with extreme zonular weakness
- Cases with missing zonules larger than 4 clock hours
- Lens subluxation

Advantages

- It is used to stabilize and recenter the capsular bag
- Specially designed for scleral fixation with sutures through eyelets in a cataract surgery
- The eyelet is projecting anteriorly which allows it to sit outside the capsular bag
- A double eyelet design is also available for cases which require additional support
- CE certified

Product Code	Model	Design	Normal Size	Compressed Size	Eyelets	Material	Qty. per box
MIPL/D3/T6	CTR Type 6 (L)		12.0 mm	10.0 mm	3	PMMA	1 pc. (Sterile)
MIPL/D3/T7	CTR Type 7 (R)		12.0 mm	10.0 mm	3	PMMA	1 pc. (Sterile)
MIPL/D3/T8	CTR Type 8 (LR)		12.0 mm	10.0 mm	4	PMMA	1 pc. (Sterile)

BUONSANTI DUAL HOOK

Buonsanti Dual Hook is a system with a combination of both, an iris retractor and a capsule hook. It is used for simultaneously providing a temporary support to the capsular bag and for temporary retraction of the iris, without making too many incisions.

Advantages

- Buonsanti Dual Hook can be used in cases which have both, zonular instability and small pupil size together.
- Dual Hook can be inserted together through the same incision, thereby reducing the number of incisions required, while providing the benefits of both the hooks together.
- Easy to insert and remove.



Product Code	Description	Qty. Per Box
MIPL/D17	Buonsanti Dual Hook	5 Dual Hooks (Sterile)

CATARACT & IOL

DHOLAKIA IRIS HOOK

Dholakia Iris Hook is a set of 5 disposable iris retractors made of black nylon fibre with an adjustable silicone lock. The hook has a 'U' shaped bend on one end, which helps in engaging the iris and pulling it backwards to enlarge the pupil. The hook is designed in such a way that it is angled to be in the plane of the anterior capsule. The silicone lock helps in retaining the hook in retracted position during the surgery. After the surgery, the lock can be adjusted to release the iris so that it comes back to its original position.

Advantages

- Unique angled design diminishes possibilities of the anterior chamber becoming shallow upon iris retraction.
- Reduces the chances of sphincter damage.
- Makes IOL insertion easy.
- Reduces chances of endothelium damage.
- Easy to insert and remove.

Indications

- Iris Hooks provides temporary retraction (pupil dilation) of the iris where dilation cannot be achieved pharmacologically.



Product Code	Description	Qty. Per Box
MIPL/D16	Dholakia Iris Hook	5 Pcs. (Sterile)

Lens Glide

Disposable lens glide is used for insertion of IOLs or other microsurgical instruments in the anterior chamber.

- Lens glide is a double ended polypropylene device
- The narrow end is used during phacoemulsification surgical procedure whereas the broader end is used during non-phaco surgical procedures
- Disposable



Product Code	Description	Qty. per box
MIPL/D5	Lens Glide	10 pcs. (Sterile)

Anterior Chamber Maintainer

Anterior chamber maintainer is used for maintaining the anterior chamber during an ophthalmic surgical procedure.



The Anterior Chamber maintainer is connected to a separate saline bottle and the tip is inserted into the anterior chamber through the side port incision. In case there is any surge or the chamber becomes shallow, the saline from the bottle automatically fills the anterior chamber avoiding posterior capsule rupture or other surge related complications.

- Ultra thin wall needle for maximum flow
- Disposable
- CE Certified



Product Code	Description	Qty. per box
MIPL/E4/20G	Anterior Chamber Maintainer (20G)	10 pcs. (Sterile)
MIPL/E4/23G	Anterior Chamber Maintainer (23G)	10 pcs. (Sterile)

CATARACT & IOL



Post Surgery Protection

Eye shield is used for a short duration to protect the patient’s eye from accidental injury or rubbing after a cataract surgery.



- Made from high quality clear polycarbonate or polypropylene
- The eye shield covers the patient's eye using an adhesive tape or a patch
- Smooth edges for maximum comfort
- CE Certified

Product Code	Description	Qty. per box
MIPL/O3/01	Clear polycarbonate Eye shield	100 pcs. (Unsterile)
	Clear polycarbonate Eye shield	100 pcs. (Sterile)
MIPL/O3/02	Polypropylene Eye shield	100 pcs. (Unsterile)



Peroperative Keratoscope

Peroperative keratoscope is used during an ophthalmic surgical procedure to judge the astigmatism induced in the cornea while putting sutures.



This is a mechanical device made out of anodized aluminum tube. The inner wall of the tube has alternate black and white rings of different thickness. The reflection of these rings on the patient's cornea helps in analyzing the astigmatism induced due to tight and loose sutures.

- Can be resterilised by autoclave or ETO
- CE Certified

Product Code	Description	Qty. per pack
MIPL/N5	Peroperative Keratoscope	1 pc. (Unsterile)

CATARACT & IOL



Micro Incision Blade with Safety

A specially designed handle with a retractable safety cap that protects the blade and minimises the risk of accidental ophthalmic blade injuries that could occur during all phases of a surgical procedure.



A simple slide mechanism pulls the safety cap back making the blade visible and easy to use .

The safety cap locks into place during the surgery. Once the surgery is completed the safety cap is pushed forward to bring the blade back under the safety cap.



Blade in Safety Cap



Blade ready to use

Lance Tip Blade

These blades are designed for making corneal/limbal incision. They are found to be very suitable for making side port.

- Simple user friendly slide mechanism
- Easy blade visibility during surgery
- Ergonomic design
- Satin finish blades for minimum reflection
- Extremely sharp cutting edge
- Polycarbonate handle
- CE certified



Product Code	Description	Qty. per box
MIPL/C3/LANCE/SK/15°	15 Degree	10 Pcs. (Sterile)
MIPL/C3/LANCE/SK/22.5°	22.50 Degree	10 Pcs. (Sterile)
MIPL/C3/LANCE/SK/30°	30 Degree	10 Pcs. (Sterile)
MIPL/C3/LANCE/SK/45°	45 Degree	10 Pcs. (Sterile)

CATARACT & IOL

MVR Blade

These blades are used for making side port in small incision cataract surgery and for making precise water tight port in vitreoretinal surgery.

- Simple user friendly slide mechanism
- Easy blade visibility during surgery
- Ergonomic design
- Satin finish blades for minimum reflection
- Extremely sharp cutting edge
- Polycarbonate handle
- CE certified



Product Code	Description	Qty. per box
MIPL/C3/MVR/SK/19G-A	19G Angled	10 pcs. (Sterile)
MIPL/C3/MVR/SK/20G-A	20G Angled	10 pcs. (Sterile)
MIPL/C3/MVR/SK/23G-A	23G Angled	10 pcs. (Sterile)
MIPL/C3/MVR/SK/25G-A	25G Angled	10 pcs. (Sterile)

Crescent Blade

These blades are designed for making scleral tunnel (pocket or groove).

- Simple user friendly slide mechanism
- Easy blade visibility during surgery
- Ergonomic design
- Satin finish blades for minimum reflection
- Extremely sharp cutting edge
- Polycarbonate handle
- CE certified



Product Code	Description	Qty. per box
MIPL/C3/CRESCENT/SK/2.0-A	2.0 mm Angled	10 Pcs. (Sterile)
MIPL/C3/CRESCENT/SK/2.5-A	2.5 mm Angled	10 Pcs. (Sterile)

Slit Blade

Precise width keratomes are designed to give incision of required width for insertion of phaco tip, irrigation/aspiration tip.

- Simple user friendly slide mechanism
- Easy blade visibility during surgery
- Ergonomic design
- Satin finish blades for minimum reflection
- Extremely sharp cutting edge
- Polycarbonate handle
- CE certified



Product Code	Description	Qty. per box
MIPL/C3/SLIT/SK/1.2A	1.2 mm	10 pcs. (Sterile)
MIPL/C3/SLIT/SK/1.3-A	1.3 mm	10 pcs. (Sterile)
MIPL/C3/SLIT/SK/1.4-A	1.4 mm	10 pcs. (Sterile)
MIPL/C3/SLIT/SK/1.5-A	1.5 mm	10 pcs. (Sterile)
MIPL/C3/SLIT/SK/1.8-A	1.8 mm	10 pcs. (Sterile)
MIPL/C3/SLIT/SK/2.0-A	2.0 mm	10 pcs. (Sterile)
MIPL/C3/SLIT/SK/2.2-A	2.2 mm	10 pcs. (Sterile)
MIPL/C3/SLIT/SK/2.3-A	2.3 mm	10 pcs. (Sterile)
MIPL/C3/SLIT/SK/2.4-A	2.4 mm	10 pcs. (Sterile)
MIPL/C3/SLIT/SK/2.5-A	2.5 mm	10 pcs. (Sterile)
MIPL/C3/SLIT/SK/2.65-A	2.65 mm	10 pcs. (Sterile)
MIPL/C3/SLIT/SK/2.75-A	2.75 mm	10 pcs. (Sterile)
MIPL/C3/SLIT/SK/2.80-A	2.80 mm	10 pcs. (Sterile)
MIPL/C3/SLIT/SK/3.00-A	3.00 mm	10 pcs. (Sterile)
MIPL/C3/SLIT/SK/3.20-A	3.20 mm	10 pcs. (Sterile)

CATARACT & IOL



MICRO INCISION BLADE

Lance Tip Blade

These blades are designed for making corneal/limbal incision. They are found to be very suitable for making side port.



- Satin finish blades for minimum reflection
- Extremely sharp cutting edge
- Polycarbonate handle
- Clear polycarbonate tray
- CE certified

Product Code	Description	Qty. per box
MIPL/C3/LANCE/15°	15 Degree	10 Pcs. (Sterile)
MIPL/C3/LANCE/22.5°	22.50 Degree	10 Pcs. (Sterile)
MIPL/C3/LANCE/30°	30 Degree	10 Pcs. (Sterile)
MIPL/C3/LANCE/45°	45 Degree	10 Pcs. (Sterile)

Slit Blade

Precise width keratomes are designed to give incision of required width for insertion of phaco tip, irrigation/aspiration tip.



- Satin finish blades for minimum reflection
- Extremely sharp cutting edge
- Polycarbonate handle
- Clear polycarbonate tray
- CE certified

Product Code	Description	Qty. per box
MIPL/C3/SLIT/1.2-A	1.2 mm	10 pcs. (Sterile)
MIPL/C3/SLIT/1.3-A	1.3 mm	10 pcs. (Sterile)
MIPL/C3/SLIT/1.4-A	1.4 mm	10 pcs. (Sterile)
MIPL/C3/SLIT/1.5-A	1.5 mm	10 pcs. (Sterile)
MIPL/C3/SLIT/1.8-A	1.8 mm	10 pcs. (Sterile)
MIPL/C3/SLIT/2.0-A	2.0 mm	10 pcs. (Sterile)
MIPL/C3/SLIT/2.2-A	2.2 mm	10 pcs. (Sterile)
MIPL/C3/SLIT/2.3-A	2.3 mm	10 pcs. (Sterile)
MIPL/C3/SLIT/2.4-A	2.4 mm	10 pcs. (Sterile)
MIPL/C3/SLIT/2.5-A	2.5 mm	10 pcs. (Sterile)
MIPL/C3/SLIT/2.65-A	2.65 mm	10 pcs. (Sterile)
MIPL/C3/SLIT/2.75-A	2.75 mm	10 pcs. (Sterile)
MIPL/C3/SLIT/2.80-A	2.80 mm	10 pcs. (Sterile)
MIPL/C3/SLIT/3.00-A	3.00 mm	10 pcs. (Sterile)
MIPL/C3/SLIT/3.20-A	3.20 mm	10 pcs. (Sterile)
MIPL/C3/SLIT/3.50-A	3.50 mm	10 pcs. (Sterile)
MIPL/C3/SLIT/3.80-A	3.80 mm	10 pcs. (Sterile)
MIPL/C3/SLIT/4.00-A	4.00 mm	10 pcs. (Sterile)

Green Blade

A very useful lance tip 45° blade made from blade fragment.



- Extremely sharp cutting edge
- Polypropylene handle
- CE certified

Product Code	Description	Qty. per box
MIPL/C3/GB/45°	Micro Incision Blade with Green Handle	50 pcs. (Sterile)

CATARACT & IOL

MVR Blade

These blades are used for making side port in small incision cataract surgery and for making precise water tight port in vitreoretinal surgery.



- Satin finish blades for minimum reflection
- Extremely sharp cutting edge
- Polycarbonate handle
- Clear polycarbonate tray
- CE certified

Product Code	Description	Qty. per box
MIPL/C3/MVR/19G	19G Straight	10 Pcs. (Sterile)
MIPL/C3/MVR/20G	20G Straight	10 Pcs. (Sterile)
MIPL/C3/MVR/23G	23G Straight	10 Pcs. (Sterile)
MIPL/C3/MVR/25G	25G Straight	10 Pcs. (Sterile)



Product Code	Description	Qty. per box
MIPL/C3/MVR/19G-A	19G Angled	10 Pcs. (Sterile)
MIPL/C3/MVR/20G-A	20G Angled	10 Pcs. (Sterile)
MIPL/C3/MVR/23G-A	23G Angled	10 Pcs. (Sterile)
MIPL/C3/MVR/25G-A	25G Angled	10 Pcs. (Sterile)

Crescent Blade

These blades are designed for making scleral tunnel (pocket or groove).



- Satin finish blades for minimum reflection
- Extremely sharp cutting edge
- Polycarbonate handle
- Clear polycarbonate tray
- CE certified

Product Code	Description	Qty. per box
MIPL/C3/CRESCENT/2.0	2.0 mm Straight	10 Pcs. (Sterile)
MIPL/C3/CRESCENT/2.0-A	2.0 mm Angled	10 Pcs. (Sterile)
MIPL/C3/CRESCENT/2.2	2.2 mm Straight	10 Pcs. (Sterile)
MIPL/C3/CRESCENT/2.2-A	2.2 mm Angled	10 Pcs. (Sterile)
MIPL/C3/CRESCENT/2.5	2.5 mm Straight	10 Pcs. (Sterile)
MIPL/C3/CRESCENT/2.5-A	2.5 mm Angled	10 Pcs. (Sterile)

Enlarger Blade

These blades are designed to give incision of required width for the IOL. The tip is made blunt to avoid secondary incision.



- Satin finish blades for minimum reflection
- Extremely sharp cutting edge
- Polycarbonate handle
- Clear polycarbonate tray
- CE certified

Product Code	Description	Qty. per box
MIPL/C3/ENLARGER/5.00-A	5.00 mm Angled	10 Pcs. (Sterile)
MIPL/C3/ENLARGER/5.20-A	5.20 mm Angled	10 Pcs. (Sterile)
MIPL/C3/ENLARGER/5.50-A	5.50 mm Angled	10 Pcs. (Sterile)

CATARACT & IOL



Micro Incision Blade (Ultra Sharp)

Use of a chemical etching process (electropolishing) represents an innovative approach to the cutting edge finishing. The blade edge has been perfected at a micro level to provide an ultra sharp, consistent and precise cutting surface. This helps to eliminate the dragging & resistance feel of traditionally grinded blades and provides an effortless tissue penetration with a superior wound architecture.



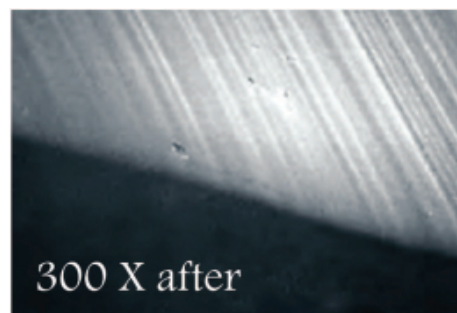
“Extraordinary blades for an extraordinary surgical experience”

Product Description

Advantage of Electropolishing



Knife cutting edge before



Knife cutting edge after

Features

- Ultra Sharp cutting edge.
- Dimensionally precise & consistent.
- Unique “Chemical Etching Process” (Electropolishing).
- Polycarbonate handle & tray.
- CE certified.
- EO Sterile

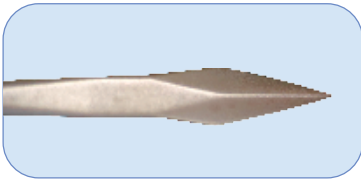
Advantages

- Effortless tissue penetration.
- Minimal drag.
- Superior wound architecture.
- Matt finish blades eliminates reflective glare.
- Smooth uniform incisions.

CATARACT & IOL

MVR Blade

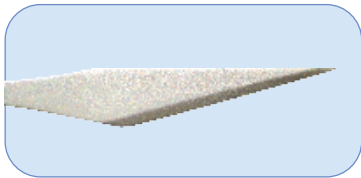
MVR blades are used for making side port in small incision cataract surgery and for making precise water tight port in vitreoretinal surgery.



Product Code	Description	Qty. per box
MIPL/C3/MVR/20G	20G Straight	10 pcs. (Sterile)
MIPL/C3/MVR/20G-A	20G Angled	10 pcs. (Sterile)

Lance Tip Blade

Lance Tip (Sideport) blades are designed for making corneal/limbal incision. They are found to be very suitable for making side port.



Product Code	Description	Qty. per box
MIPL/C3/LANCE/15°	15 Degree	10 Pcs. (Sterile)
MIPL/C3/LANCE/30°	30 Degree	10 Pcs. (Sterile)
MIPL/C3/LANCE/45°	45 Degree	10 Pcs. (Sterile)

Crescent Blade

Crescent blades are designed for making scleral tunnel (pocket or groove).



Product Code	Description	Qty. per box
MIPL/C3/CRESCENT/2.0-A	2.00 mm Angled	10 Pcs. (Sterile)
MIPL/C3/CRESCENT/2.2-A	2.20 mm Angled	10 Pcs. (Sterile)
MIPL/C3/CRESCENT/2.5-A	2.50 mm Angled	10 Pcs. (Sterile)

Slit Blade

Slit Blades (Keratomes) are designed to precisely give incision of required width for insertion of phaco tip, irrigation/aspiration tip.



Product Code	Description	Qty. per box
MIPL/C3/SLIT/2.2-A	2.20 mm	10 Pcs. (Sterile)
MIPL/C3/SLIT/2.4-A	2.40 mm	10 Pcs. (Sterile)
MIPL/C3/SLIT/2.75-A	2.75 mm	10 Pcs. (Sterile)
MIPL/C3/SLIT/2.80-A	2.80 mm	10 Pcs. (Sterile)
MIPL/C3/SLIT/3.20-A	3.20 mm	10 Pcs. (Sterile)

OPHTHALMIC CANNULAS



Anaesthesia Cannula Disposable ophthalmic cannula used for administering local anesthesia.



- EO Sterile
- CE certified

Product Code	Description with Gauge	Needle Length	Qty. per box
MIPL/E6/A4	Retrobulbar Cannula (Atkinson) - 19G	38 mm	10 Pcs. (Sterile)
MIPL/E6/A5	Retrobulbar Cannula (Atkinson) - 21G	38 mm	10 Pcs. (Sterile)
MIPL/E6/A1	Retrobulbar Cannula (Atkinson) - 23G	38 mm	10 Pcs. (Sterile)
MIPL/E6/A2	Retrobulbar Cannula (Atkinson) - 25G	38 mm	10 Pcs. (Sterile)
MIPL/E6/A3	Retrobulbar Cannula (Atkinson) - 27G	38 mm	10 Pcs. (Sterile)



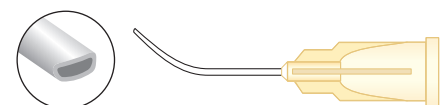
Retrobulbar Cannula

Product Code	Description with Gauge	Needle Length	Qty. per box
MIPL/E6/B4	Peribulbar Cannula (Atkinson) - 19G	25 mm	10 Pcs. (Sterile)
MIPL/E6/B5	Peribulbar Cannula (Atkinson) - 21G	25 mm	10 Pcs. (Sterile)
MIPL/E6/B1	Peribulbar Cannula (Atkinson) - 23G	25 mm	10 Pcs. (Sterile)
MIPL/E6/B2	Peribulbar Cannula (Atkinson) - 25G	25 mm	10 Pcs. (Sterile)
MIPL/E6/B3	Peribulbar Cannula (Atkinson) - 27G	25 mm	10 Pcs. (Sterile)



Peribulbar Cannula

Product Code	Description with Gauge	Needle Length	Qty. per box
MIPL/E6/C1	Sub Tenon Cannula - 19G	25 mm	10 Pcs. (Sterile)



Sub Tenon Cannula

OPHTHALMIC CANNULAS



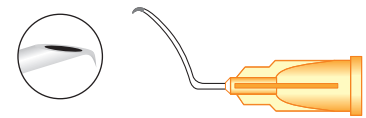
Cystotome Cannula



Disposable ophthalmic cannula used for capsulorhexis, intercapsular / endocapsular and can opener capsulotomy technique. Sharp edge on both sides of the cannula tip is used to puncture and cut/tear the capsule.

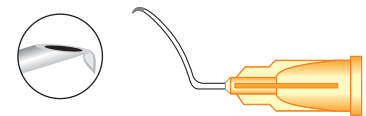
- EO Sterile
- CE certified

Product Code	Description with Gauge	Needle Length	Qty. per box
MIPL/E7/A1	Cystotome (Formed) - 25G	16 mm	10 Pcs. (Sterile)
MIPL/E7/A5	Cystotome (Formed) - 26G	16 mm	10 Pcs. (Sterile)
MIPL/E7/A2	Cystotome (Formed) - 27G	16 mm	10 Pcs. (Sterile)
MIPL/E7/A3	Cystotome (Formed) - 30G	16 mm	10 Pcs. (Sterile)



Cystotome (formed)

Product Code	Description with Gauge	Needle Length	Qty. per box
MIPL/E7/A4	Cystotome (Blumenthal) - 27G	16 mm	10 Pcs. (Sterile)



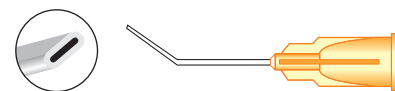
Cystotome (Blumenthal)

Hydrodissection/ Hydrodelineation Cannula

Disposable ophthalmic cannula used to effectively separate layers of nucleus and cortex in cataract surgery procedures.



- EO Sterile
- CE certified



Hydrodissection/
Hydrodelineation Cannula

Product Code	Description with Gauge	Needle Length	Bend Length	Qty. per box
MIPL/E9/A3	Hydrodissection/Hydrodelineation Cannula - 23G	22 mm	9 mm	10 Pcs. (Sterile)
MIPL/E9/A1	Hydrodissection/Hydrodelineation Cannula - 25G	22 mm	9 mm	10 Pcs. (Sterile)
MIPL/E9/A4	Hydrodissection/Hydrodelineation Cannula - 27G	22 mm	9 mm	10 Pcs. (Sterile)
MIPL/E9/A2	Hydrodissection/Hydrodelineation Cannula (J-Shaped) - 25G	22 mm	9 mm	10 Pcs. (Sterile)

OPHTHALMIC CANNULAS



Air Injection & Irrigation Cannula

Disposable ophthalmic cannula used for maintaining or forming anterior chamber and irrigating cornea during surgery. It may be used for injection or removal of air, fluids & viscoelastic substances during an ophthalmic surgery.



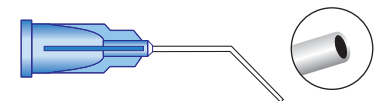
- EO Sterile
- CE certified

Product Code	Description with Gauge	Needle Length	Bend Length	Qty. per box
MIPL/E8/A5	Anterior Chamber Cannula (Rycroft) - 16G	22 mm	6 mm	10 Pcs. (Sterile)
MIPL/E8/A6	Anterior Chamber Cannula (Rycroft) - 19G	22 mm	6 mm	10 Pcs. (Sterile)
MIPL/E8/A7	Anterior Chamber Cannula (Rycroft) - 20G	22 mm	6 mm	10 Pcs. (Sterile)
MIPL/E8/A8	Anterior Chamber Cannula (Rycroft) - 21G	22 mm	6 mm	10 Pcs. (Sterile)
MIPL/E8/A1	Anterior Chamber Cannula (Rycroft) - 23G	22 mm	6 mm	10 Pcs. (Sterile)
MIPL/E8/A2	Anterior Chamber Cannula (Rycroft) - 25G	22 mm	6 mm	10 Pcs. (Sterile)
MIPL/E8/A9	Anterior Chamber Cannula (Rycroft) - 26G	22 mm	6 mm	10 Pcs. (Sterile)
MIPL/E8/A3	Anterior Chamber Cannula (Rycroft) - 27G	22 mm	6 mm	10 Pcs. (Sterile)
MIPL/E8/A10	Anterior Chamber Cannula (Rycroft) - 28G	22 mm	6 mm	10 Pcs. (Sterile)
MIPL/E8/A4	Anterior Chamber Cannula (Rycroft) - 30G	22 mm	6 mm	10 Pcs. (Sterile)



Anterior Chamber Cannula

Product Code	Description with Gauge	Needle Length	Bend Length	Qty. per box
MIPL/E8/B1	Viscoelastic Cannula - 23G	22 mm	9 mm	10 Pcs. (Sterile)
MIPL/E8/B2	Viscoelastic Cannula - 25G	22 mm	9 mm	10 Pcs. (Sterile)
MIPL/E8/B3	Viscoelastic Cannula - 27G	22 mm	9 mm	10 Pcs. (Sterile)

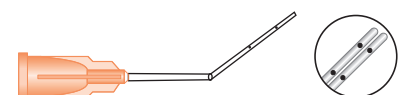


Viscoelastic Cannula

Lasik Cannula

Disposable ophthalmic cannula used for all types of refractive surgery and minor office procedure.

Product Code	Description with Gauge	Needle Length	Qty. per box
MIPL/E16/A1	Lasik Irrigating Cannula (Banaji) - 23G	22 mm	10 Pcs. (Sterile)
MIPL/E16/A2	Lasik Double Arm Cannula - Irrigation by eight ports	N/A	10 Pcs. (Sterile)



Lasik Cannula

- EO Sterile
- CE certified

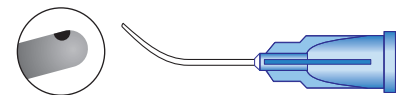
OPHTHALMIC CANNULAS



Cortex Aspirating Cannula

Disposable ophthalmic cannula used for aspirating cortical debris when chamber is maintained with either an anterior chamber maintainer or a viscoelastic substance.

Product Code	Description with Gauge	Needle Length	Qty. per box
MIPL/E10/A1	Cortex Aspirating Cannula (Simcoe) - 21G	22 mm	10 Pcs. (Sterile)
MIPL/E10/A2	Cortex Aspirating Cannula (Simcoe) - 23G	22 mm	10 Pcs. (Sterile)
MIPL/E10/A4	Cortex Aspirating Cannula (Simcoe) - 25G	22 mm	10 Pcs. (Sterile)
MIPL/E10/A5	Cortex Aspirating Cannula (Simcoe) - 26G	22 mm	10 Pcs. (Sterile)
MIPL/E10/A3	Cortex Aspirating Cannula (J-Shaped) - 25G	22 mm	10 Pcs. (Sterile)



Cortex Aspirating Cannula

- EO Sterile
- CE certified

Irrigating & Aspirating Cannula

Disposable ophthalmic cannula used for maintaining or forming anterior chamber and irrigating cornea during surgery. It may be used for injection or removal of air, fluids & viscoelastic substances during an ophthalmic surgery.

Product Code	Description with Gauge	CE Certified	Qty. per box
MIPL/E11/A6	I & A Cannula (Simcoe Regular) - 21G	No	10 Pcs. (Sterile)
MIPL/E11/A1	I & A Cannula (Simcoe Regular) - 22G	Yes	10 Pcs. (Sterile)
MIPL/E11/A2	I & A Cannula (Simcoe Regular) - 23G	Yes	10 Pcs. (Sterile)



Irrigating & Aspirating Cannula

- EO Sterile
- CE certified

Capsule Polishers

Disposable ophthalmic cannula used for removing debris from the posterior, anterior and equatorial regions of capsular bag. Micro etched tips are slightly roughened for gentle polishing.

Product Code	Description with Gauge	Needle Length	Bend Length	Qty. per box
MIPL/E12/A1	Capsule Polisher (Kratz) - 21G	22 mm	7 mm	10 Pcs. (Sterile)
MIPL/E12/A2	Capsule Polisher (Kratz) - 23G	22 mm	7 mm	10 Pcs. (Sterile)
MIPL/E12/A4	Capsule Polisher (Kratz) - 25G	22 mm	7 mm	10 Pcs. (Sterile)
MIPL/E12/A5	Capsule Polisher (Kratz) - 27G	22 mm	7 mm	10 Pcs. (Sterile)
MIPL/E12/A3	Capsule Polisher (Pearce) Olive Tip - 25G	25 mm	7 mm	10 Pcs. (Sterile)



Capsule Polishers

- EO Sterile
- CE certified

OPHTHALMIC CANNULAS

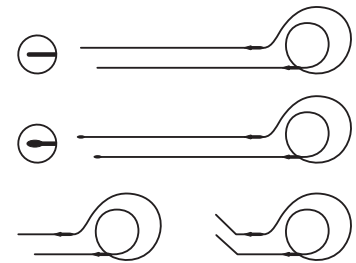


Lacrimal Cannula

Disposable ophthalmic cannula used for treatment of canaliculus system stenosis or nasolacrimal duct obstruction.



Product Code	Description with Gauge	Qty. per box
MIPL/E5/23R/7.5	Lacrimal Intubation Set - 7.50cm X 23G (Regular)	10 Pcs. (Sterile)
MIPL/E5/23O/7.5	Lacrimal Intubation Set - 7.50cm X 23G (Olive)	10 Pcs. (Sterile)
MIPL/E5/23R/11	Lacrimal Intubation Set - 11.00cm X 23G (Regular)	10 Pcs. (Sterile)
MIPL/E5/23O/11	Lacrimal Intubation Set - 11.00cm X 23G (Olive)	10 Pcs. (Sterile)
MIPL/E5/23R/15	Lacrimal Intubation Set - 15.00cm X 23G (Regular)	10 Pcs. (Sterile)
MIPL/E5/23O/15	Lacrimal Intubation Set - 15.00cm X 23G (Olive)	10 Pcs. (Sterile)
MIPL/E5/23R/17.5	Lacrimal Intubation Set - 17.50cm X 23G (Regular)	10 Pcs. (Sterile)
MIPL/E5/23O/17.5	Lacrimal Intubation Set - 17.50cm X 23G (Olive)	10 Pcs. (Sterile)
MIPL/E5/20STR/4.5	Lacrimal Intubation Set - DCR Straight - 4.50cm x 20G	10 Pcs. (Sterile)
MIPL/E5/20ANG/4.5	Lacrimal Intubation Set - DCR Angled - 4.50cm x 20G	10 Pcs. (Sterile)



- EO Sterile
- CE certified

Lens Removal Cannula

Disposable ophthalmic cannula used for irrigating and lifting out the lens nucleus and large cortical debris.

Product Code	Description with Gauge	Needle Length	Qty. per box
MIPL/E13/A3	Irrigating Vectus (Knole-Pearce) - 23G	22 mm	10 Pcs. (Sterile)
MIPL/E13/A1	Irrigating Vectus (Knole-Pearce) - 25G	22 mm	10 Pcs. (Sterile)
MIPL/E13/A2	Irrigating Vectus (Knole-Pearce) - 27G	22 mm	10 Pcs. (Sterile)

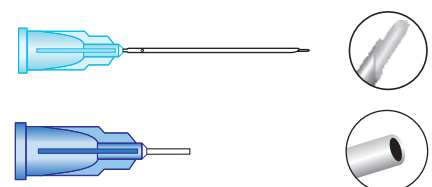


Lens Removal Cannula

Vitreous Retinal Cannula

Disposable ophthalmic cannula used for specific procedure in vitreous retinal surgery.

Product Code	Description with Gauge	Needle Length	Qty. per box
MIPL/E14/A2	PFCL I/A Dual Bore Cannula - 20G/25G	37.00 mm	10 Pcs. (Sterile)
MIPL/E14/A3	PFCL I/A Dual Bore Cannula - 23G/30G	37.00 mm	10 Pcs. (Sterile)
MIPL/E14/A8	VFI Blunt Tip Cannula - 23G	4.00 mm	10 Pcs. (Sterile)
MIPL/E14/A9	VFI Blunt Tip Cannula - 25G	4.00 mm	10 Pcs. (Sterile)



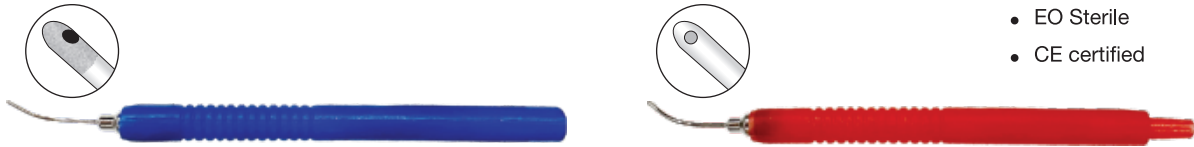
Vitreous Retinal Cannula

OPHTHALMIC CANNULAS



Bimanual Cannula

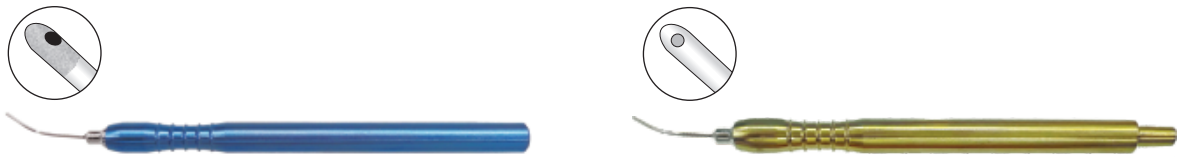
Disposable ophthalmic cannula used for irrigation and aspiration of the anterior chamber.



- EO Sterile
- CE certified

Bimanual I & A Cannula - Disposable

Product Code	Description	Gauge	Port Size	Qty. per box
MIPL/E15/DP/21WP	Bimanual Cannula Handpiece Set with Polisher – Disposable			1 Set (Sterile)
MIPL/E15/A8/01	Bimanual Irrigation Handpiece – Disposable	21G	0.50mm	1 Pc. (Sterile)
MIPL/E15/A8/02	Bimanual Aspiration Handpiece with polisher – Disposable	21G	0.40mm	1 Pc. (Sterile)
MIPL/E15/DP/22WP	Bimanual Cannula Handpiece Set with Polisher – Disposable			1 Set (Sterile)
MIPL/E15/A9/01	Bimanual Irrigation Handpiece – Disposable	22G	0.45mm	1 Pc. (Sterile)
MIPL/E15/A9/02	Bimanual Aspiration Handpiece with polisher – Disposable	22G	0.35mm	1 Pc. (Sterile)
MIPL/E15/DP/23WP	Bimanual Cannula Handpiece Set with Polisher – Disposable			1 Set (Sterile)
MIPL/E15/A10/01	Bimanual Irrigation Handpiece – Disposable	23G	0.40mm	1 Pc. (Sterile)
MIPL/E15/A10/02	Bimanual Aspiration Handpiece with polisher – Disposable	23G	0.30mm	1 Pc. (Sterile)



Bimanual I & A Cannula - Titanium

Product Code	Description	Gauge	Port Size	Qty. per pack
MIPL/E15/A6/01	Bimanual Irrigation Handpiece - Titanium	21G	0.50mm	1 Pc.
MIPL/E15/A6/02	Bimanual Aspiration Handpiece with polisher - Titanium	21G	0.40mm	1 Pc.
MIPL/E15/A7/01	Bimanual Irrigation Handpiece - Titanium	22G	0.45mm	1 Pc.
MIPL/E15/A7/02	Bimanual Aspiration Handpiece with polisher - Titanium	22G	0.35mm	1 Pc.
MIPL/E15/A5/01	Bimanual Irrigation Handpiece - Titanium	23G	0.40mm	1 Pc.
MIPL/E15/A5/02	Bimanual Aspiration Handpiece with polisher - Titanium	23G	0.30mm	1 Pc.

Coaxial Cannula

Disposable ophthalmic cannula used for irrigation and aspiration of the anterior chamber.



Coaxial I & A Handpiece - Disposable

Product Code	Description	Gauge	Port Size	Qty. per pack
MIPL/E19/A2/01	Coaxial I&A Handpiece (Straight) - Disposable	21G	0.40mm	1 pc. (Sterile)
MIPL/E19/A2/02	Coaxial I&A Handpiece (45° Angle) - Disposable	21G	0.40mm	1 pc. (Sterile)
MIPL/E19/A3/01	Coaxial I&A Handpiece (Straight) - Disposable	23G	0.30mm	1 pc. (Sterile)
MIPL/E19/A3/02	Coaxial I&A Handpiece (45° Angle) - Disposable	23G	0.30mm	1 pc. (Sterile)

TEACHING & TRAINING DEVICES

i-STAND Eyeball Stand

This mechanical device is used for securely fixing the human or animal eyes and micro surgical training on the same.



- Both human and animal eyes can be fixed on the stand
- Required anterior chamber pressure can be created and maintained
- Can be sterilized by autoclaving or EO gas
- CE Certified

Product Code	Description	Qty. per box
MIPL/M1	Eyeball Stand	1 pc.

i-STAND PLUS Eyeball Stand With Fixation Head

This mechanical device is used for securely fixing the human or animal eyes and micro surgical training on the same.



- Both human and animal eyes can be fixed on the stand
- Required anterior chamber pressure can be created and maintained
- Can be sterilized by autoclaving or EO gas
- CE Certified

Product Code	Description	Qty. per box
MIPL/M7	Eyeball Stand with Fixation Head	1 pc.

TEACHING & TRAINING DEVICES



Laser-I is an ophthalmic teaching device used for simulating green/red laser shots in an artificial diseased retina.



- The optics resembles an aphakic, emetropic eye
- A photographic film is used as an artificial diseased retina, which responds to the laser shots
- It can be mounted on slit lamp of all available makes
- “Laser-i” is an optical + mechanical device which does not require electricity
- CE Certified

Product Code	Description	Qty. per box
MIPL/M3	Laser Practice Eye	1 pc.



This mechanical device is used for teaching & training of glaucoma skills.

- This device can be clamped on a slit lamp
- Animal eyes can be fixed on the stand
- The simulated eye mounted can be used to practice “Applanation Tonometry” and “Gonioscopy” allowing deliberate practice
- Can be sterilized by autoclaving or EO gas



Product Code	Description	Qty. per box
MIPL/M8	Eyeball Stand (Slit Lamp mounted)	1 pc.

TEACHING & TRAINING DEVICES

PHACO-i Phaco Practice Eye

Phaco-i is a simulator eye for practicing the basic steps of phaco surgery and getting good hand foot coordination on the phaco machines.



- Can be stored at room temperature
- Only non biological materials used in components
- Can be used with a Practice head for better simulation
- Ideal training tool for phaco beginners to reduce the learning curve
- CE Certified

Product Code	Description	Qty. per box
MIPL/M2	Phaco Practice Eye	10 pcs.

i-MASK Phaco Practice Eye Fixation Head

This artificial head is used for fixation of the phaco practice eyes and give a more natural feel of the human face to the user.



- Simulates facial contours
- Includes a fluid collection tray and a drainage tube
- Easy to clean
- Light weight – easy to carry
- CE Certified

Product Code	Description	Qty. per box
MIPL/M6	Phaco Practice Eye Fixation Head	1 pc.

FLUID MANAGEMENT DEVICES



PVA Sponge Spears

High quality PVA sponge spears specifically designed for lasik and other delicate procedures.



Product Code	Description	Qty. per box
MIPL/B2/5	5 PVA Spears per foil, 50 foils per box	250 Spears per box (Sterile)

- Special PVA material for fastest wicking spears available
- Highly absorbent and particulate free
- Wide firm tip for tissue manipulation
- Innovative moisture proof packing
- Gamma Sterile
- CE certified



PVA Sponge Spears

High quality PVA sponge spears specifically designed for lasik and other delicate procedures.



Product Code	Description	Qty. per box
MIPL/B2/5/NE	5 PVA Spears per foil, 50 foils per box	250 Spears per box (Sterile)

- Special PVA material for fastest wicking spears available
- Highly absorbent and particulate free
- Wide firm tip for tissue manipulation
- Innovative moisture proof packing
- Gamma Sterile



Cellulose Sponge Spears

High quality cellulose sponge spears specifically designed for fast and high capacity fluid absorption.

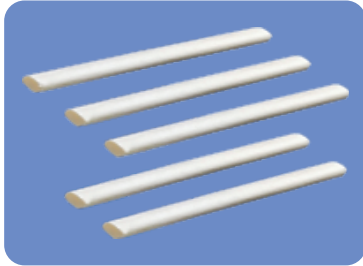


Product Code	Description	Qty. per box
MIPL/B1/5	5 Cellulose Spears per pouch, 50 pouches per box	250 Spears per box (Sterile)

- Special cellulose material gives the fastest wicking spears available
- Highly absorbent and an ideal replacement for cotton swabs
- Gamma Sterile
- CE certified

FLUID MANAGEMENT DEVICES

Cellulose Absorbent Sticks



Highly absorbent and lint free cellulose sponge sticks are specifically designed for fast and high capacity fluid absorption.

- Highly absorbent and an ideal replacement for cotton swabs
- Useful in a variety of procedures requiring wicking of fluids
- Lint free cellulose sponge sticks
- ETO Sterilized

Product Code	Description	Qty. Per Box
MIPL/B7	Cellulose Absorbent Sticks	50 Packs (Sterile)

PVA Instrument Wipe



High quality PVA sponge wipe for care and cleaning of extremely delicate micro instruments.



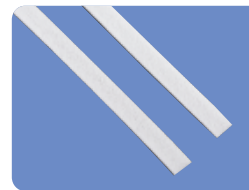
- Special PVA material is highly absorbent and particulate free
- Does not damage extremely delicate instruments
- Prolongs the life of expensive instruments
- Gamma Sterile

Product Code	Description	Qty. Per Box
MIPL/B5	PVA Instrument Wipe (7.5 x 7.5 cms)	10 pcs. (Sterile)

PVA Wick Drain



High quality PVA wick to remove excess fluids from the surgical site with fast wicking ability.



- Special PVA material is highly absorbent and particulate free
- Gamma Sterile

Product Code	Description	Qty. Per Box
MIPL/B4	PVA Wick Drain	10 pcs. (Sterile)

PVA Segment



High quality PVA sponge segments for controlled application of Mitomycin C on the tissue.



- Special PVA material is highly absorbent and particulate free
- EO Sterile

Product Code	Description	Qty. Per Box
MIPL/B6/01	PVA Segment (Rectangular)	10 pcs. (Sterile)
MIPL/B6/02	PVA Segment (Round 9.5 mm Dia)	10 pcs. (Sterile)

MISCELLANEOUS

CAM Vision Stimulator

This instrument is designed for the treatment of lazy/amblyopic eye based on the concept of active and controlled simulation.



- Spatially oriented stimulus
- All day passive occlusion replaced by seven-minute active stimulation
- Compact, portable model which can be given to the patient saving time and helping in regular exercise
- Size : 21 x 14 x 11 cm
- Weight : 1 Kg
- 6 Discs provided with the instrument
- CE Certified

Product Code	Description	Qty. Per Box
MIPL/M5	Cam Vision Stimulator	1 pc.

Slit Lamp Shield

A protective device designed to be used with a slit lamp to minimize the risk of COVID-19 infection to the user in ophthalmology clinics.

- Designed for maximum user safety
- Material: 3mm Clear Acrylic
- Available Size: 300 x 300 mm
- Easy to install and remove
- Universal design for all slit lamps
- Easy to clean and disinfect



Product Code	Description	Qty. per pack
MIPL/N11/02	Slit Lamp Shield (300x300 mm)	1 Pc.

MISCELLANEOUS

Occluder with or without Pinhole

- Made of ABS Plastic
- Matt finish to reduce reflections
- Ergonomic grip
- Branding options on the handle

Occluder with Pinhole is used to detect presence of refractive error as a cause of poor vision. Occluder without Pinhole is used to block an eye without touching the eyeball.

Product Code	Description	Qty. Per Box
MIPL/N9	Occluder without pinhole	10 Pcs.
MIPL/N10	Occluder with pinhole	10 Pcs.



Occluder (Multi Purpose)

Unique design of the occluder allows for eye examination by either multiple pinholes or a single pinhole. The shutter attachments can be used to cover both the eyes.

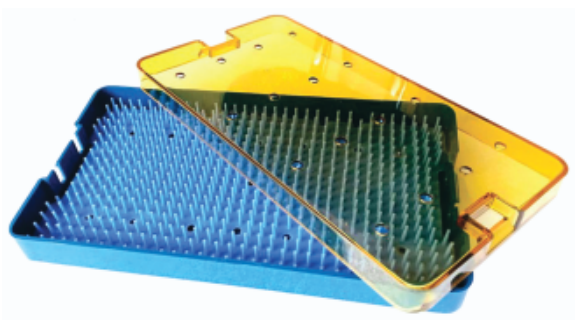


- 1.20 mm diameter pinholes.
- Made of ABS Plastic and stainless steel rivets.
- Useful in numerous Ophthalmic and Optometric diagnosis.
- Ergonomic grip
- Branding options on the handle

Product Code	Description	Qty. per box
MIPL/N10/MP	Occluder (Multi Purpose)	1 Pc.

Sterilization Tray

Highly durable plastic sterilization tray designed to protect delicate instruments during washing, sterilization, transportation and storage. Slots in silicone mat and base facilitate the circulation of steam and aid in the drying process.



- Molded from high quality thermoplastics to ensure product strength structural integrity and long life cycle.
- A unique pebble-type surface on the base to keep mats from sticking.
- Safety locks in the lid and silicone mat helps in protection of the devices during sterilization, transportation and storage.
- Dimensions of each tray are designed to accommodate a variety of instrument sizes and shapes.
- Transparent lid for easy identification of the sterilized devices.
- Very light weight and rust free as compared to the stainless steel trays.
- Modes of sterilization: (1) ETO (2) Autoclave (3) Formalin Chamber

Product Code	Description	Dimensions	Qty. per box
MIPL/N14/01	Sterilization Tray with Silicone Mat	6.5" x 2.75" x 0.75"	1 Pc.
MIPL/N14/02	Sterilization Tray with Silicone Mat	8.0" x 5.0" x 0.75"	1 Pc.
MIPL/N14/03	Sterilization Tray with Silicone Mat	8.0" x 5.0" x 1.5"	1 Pc.
MIPL/N14/04	Sterilization Tray with Silicone Mat	9.5" x 5.25" x 1.5"	1 Pc.
MIPL/N14/05	Phaco Tray with Strip	9.5" x 5.25" x 1.5"	1 Pc.

Our Global Footprint



- Azerbaijan
- Albania
- Australia
- Bangladesh
- Bahrain
- Brazil
- Bulgaria
- Cambodia
- Chile
- Columbia
- Croatia
- Cyprus
- Czech Republic
- Denmark
- Egypt
- Finland
- France
- Georgia
- Germany
- Greece
- Guatemala
- Hongkong
- India
- Indonesia
- Iraq
- Israel
- Italy
- Jordan
- Kenya
- Latvia
- Lebanon
- Libya
- Mali
- Malaysia
- Mauritius
- Mexico
- Mongolia
- Morocco
- Myanmar
- Nepal
- Netherland
- New Zealand
- Nigeria
- Norway
- Peru
- Philippines
- Poland
- Portugal
- Romania
- Russia
- Saudi Arabia
- Singapore
- Slovakia
- S Korea
- South Africa
- Spain
- Sri Lanka
- Switzerland
- Syria
- Taiwan
- Tanzania
- Thailand
- Trinidad & Tobago
- Tunisia
- Turkey
- UAE
- UK
- USA
- Vietnam
- Yemen



Distributors

MIPL products are available domestically and internationally through a network of our valued distribution partners. Kindly visit our website www.madhuinstruments.com for a list of our distribution partners. Kindly contact us if you are interested in becoming our distribution partner.



OBL and Kit Packers

MIPL offers non-sterile and sterile products in customized packing. Contact us to discuss how we can help your product development or contract manufacturing needs.



MADHU INSTRUMENTS PVT. LTD.

A-260, Okhla Industrial Area, Phase - 1, New Delhi - 110020, India

T: (+91-11) 4270 1030, 31 | E: sales@madhuinstruments.com | www.madhuinstruments.com

Customer Care No. +91 9810866176 (for international queries), +91 7428186111 (for domestic queries)

Ref. No. MIPL/Pub/Cat/01, Issue No.: 02, Dt. 01/10/2019, Rev. No. 07, Dt. 06/12/2023